



**MITCHELL FIELD
 BOATING ACCESS
 IMPROVEMENTS**
 HARPSWELL, MAINE

DRAFT

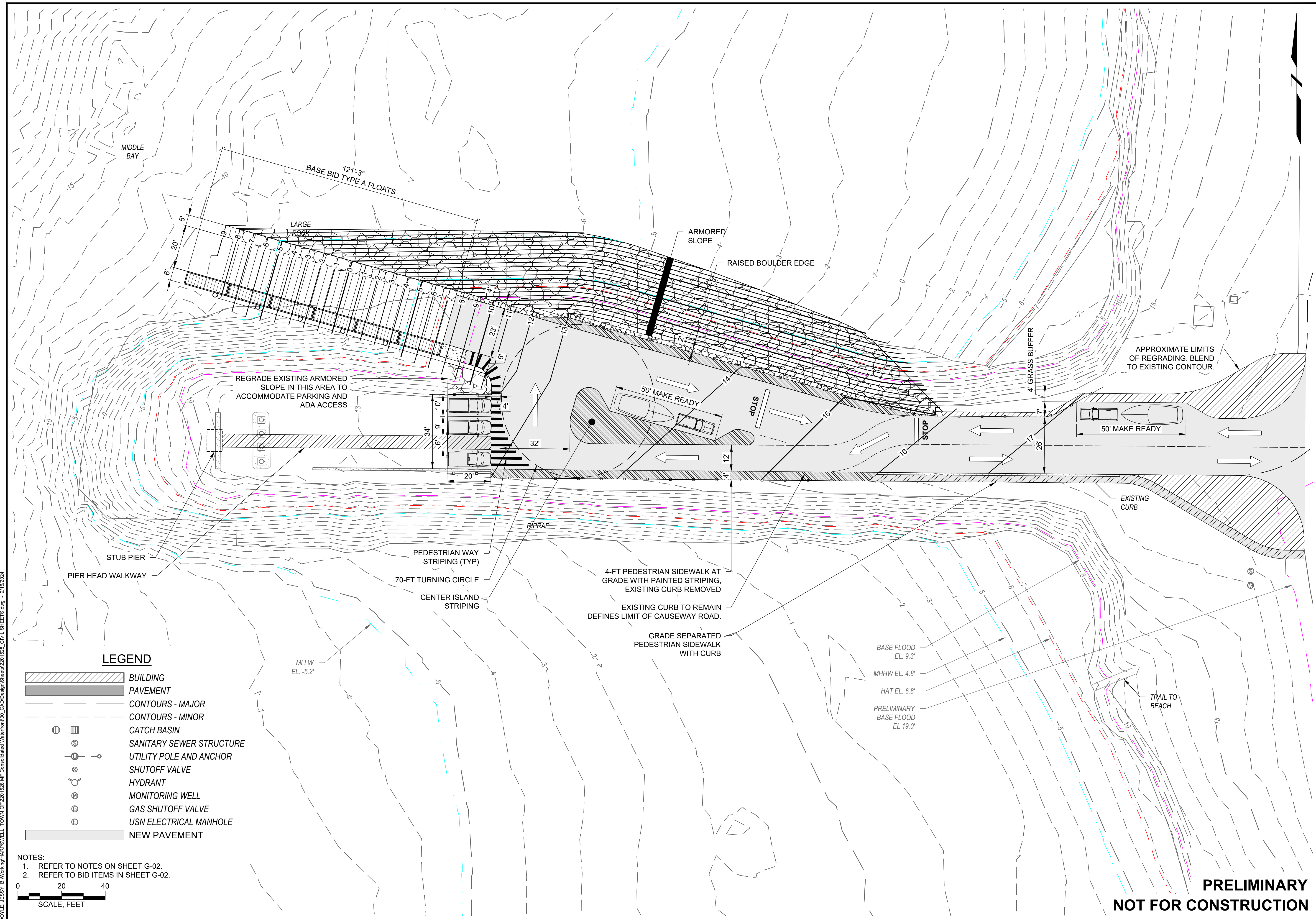
P.E. No.:
 Approved:
 Checked:
 Drawn: JLD
 Designed: BJB
 GEI Project 2201528

Attention: 1"
 0 1" Scale bar
 If this scale bar does not measure 1" then drawing is not original scale.

NO.	DATE	ISSUE/REVISION	APP
8	9/16/2024	REV. SITE PLAN	DJB
7	4/24/2024	PLANNING BOARD REVIEW	DJB
6	8/5/2023	TEL GRASS SURVEY/EC NOTE	BJB
5	6/9/2023	PERMIT	BJB
4	3/7/2023	REVISED PERMIT SET	BJB
3	7/29/2022	MF UPDATE PERMIT REVIEW	BJB
2	7/25/2022	PERMIT SET	BJB
1	7/8/2022	PROGRESS SET	BJB

SHEET NAME
CAUSEWAY PLAN

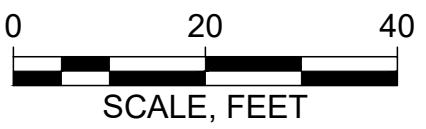
SHEET NO.
C-03



LEGEND

- BUILDING
- PAVEMENT
- CONTOURS - MAJOR
- CONTOURS - MINOR
- CATCH BASIN
- SANITARY SEWER STRUCTURE
- UTILITY POLE AND ANCHOR
- SHUTOFF VALVE
- HYDRANT
- MONITORING WELL
- GAS SHUTOFF VALVE
- USN ELECTRICAL MANHOLE
- NEW PAVEMENT

- NOTES:
- REFER TO NOTES ON SHEET G-02.
 - REFER TO BID ITEMS IN SHEET G-02.



DOYLE, JESSY, B:\Working\HARPSWELL_TOWN_OF\2201528_MF_Consolidated\Waterfront03_CADD\Design\Sheets\2201528_CIVIL_SHEETS.dwg - 9/16/2024

**PRELIMINARY
 NOT FOR CONSTRUCTION**